



PDOT Sustainability Policy Proposal

USP 410

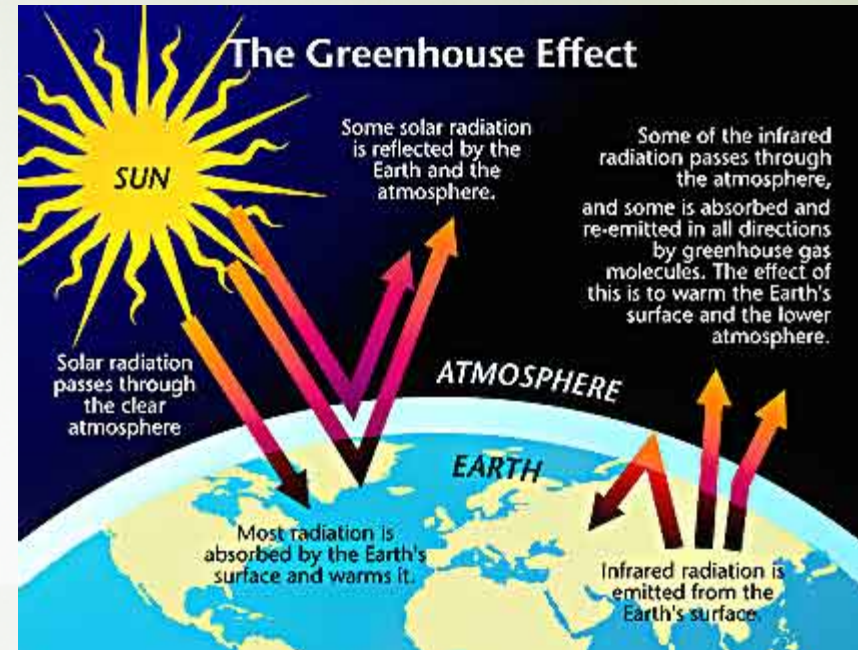
Portland Traffic & Transportation Issues

Michelle Debelak



Global Warming

- The "greenhouse effect" refers to the natural phenomenon that keeps the Earth in a temperature range that allows life to flourish. The sun's enormous energy warms the Earth's surface and its atmosphere. As this energy radiates back toward space as heat, a portion is absorbed by a delicate balance of heat-trapping gases in the atmosphere—among them carbon dioxide and methane—which creates an insulating layer. With the temperature control of the greenhouse effect, the Earth has an average surface temperature of 59°F (15°C). Without it, the average surface temperature would be 0°F (-18°C), a temperature so low that the Earth would be frozen and could not sustain life.
- "Global warming" refers to the rise in the Earth's temperature resulting from an increase in heat-trapping gases in the atmosphere.



Global Warming

- Examples from NRDC
 - Greater evaporation as a result of global warming could increase the risk of wildfires.
 - More frequent and more intensive heat waves could result in more heat-related deaths.
- Photo: Gary Braasch, Chicago, July 1995.



Global Warming

- Examples from NRDC
- Warmer temperatures may cause some ecosystems, including alpine meadows in the Rocky Mountains, to disappear.



Regional Examples

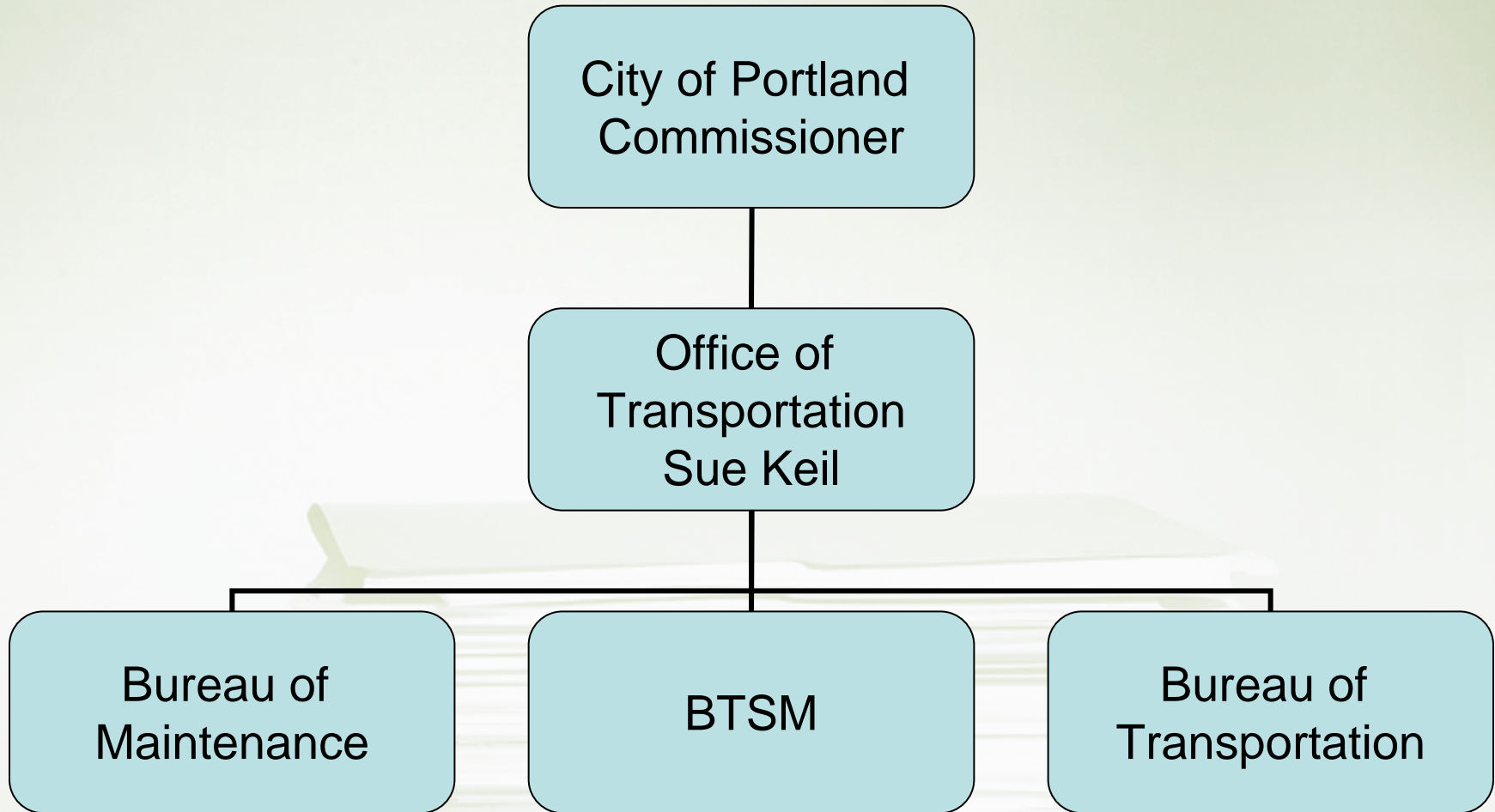
- Rising water levels in S.F. will stress city's drains
 - Global warming is usually thought of as something that will adversely affect humans decades down the road. But rising water levels in the San Francisco Bay, a consequence of higher global temperatures, are beginning to cause problems for San Francisco's combined storm drain-sewer system -- difficulties that will cost millions of dollars to correct. (12/06/06) Sacramento Bee
 - Article gathered through Tidepool
- Adam's Burnside Plan
 - "This is a once-in-a-generation opportunity to put the 'center' back in center city," Adams said, "and to bridge this divide between north and south."



What's Being Done

- Planning first
- Grants from Clean Air
- Transportation options
- Ideas for alternative planning
 - Streetscape Task Force: Report & Recommendations
- Sustainable infrastructure
 - Stormwater Reuse and Water Efficiency
 - Alternative Paving Materials

Hierarchy

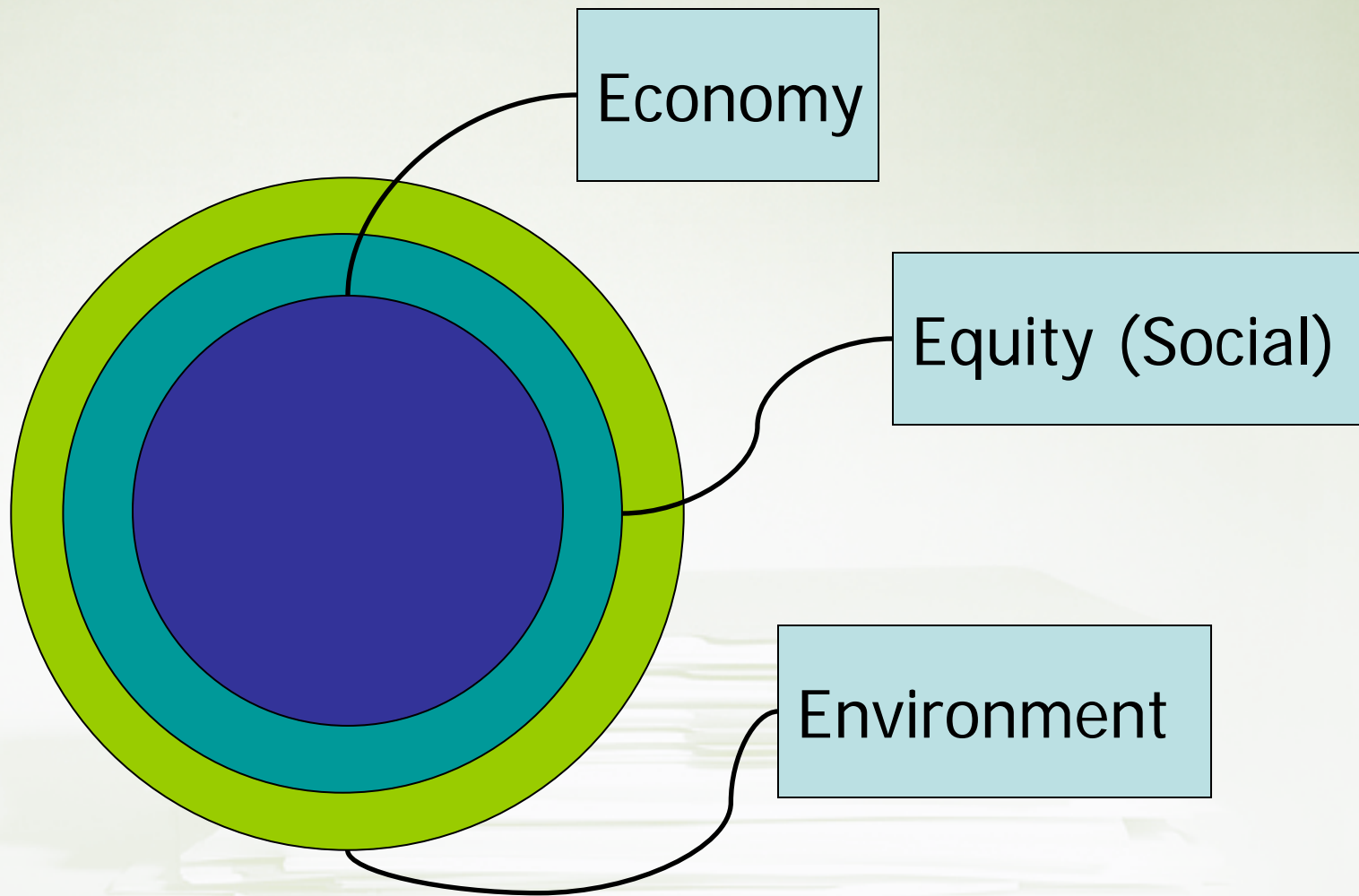


Bruntland Report

- Sustainable development is development that meets the needs of the present without compromising the ability of future generations to meet their own needs



Sustainability



Problem

- Although visionaries in many respects, still business as usual



Solution

- Create policy framework that first looks at
 - Environment
 - Equity
 - Economy
- Guiding principles

