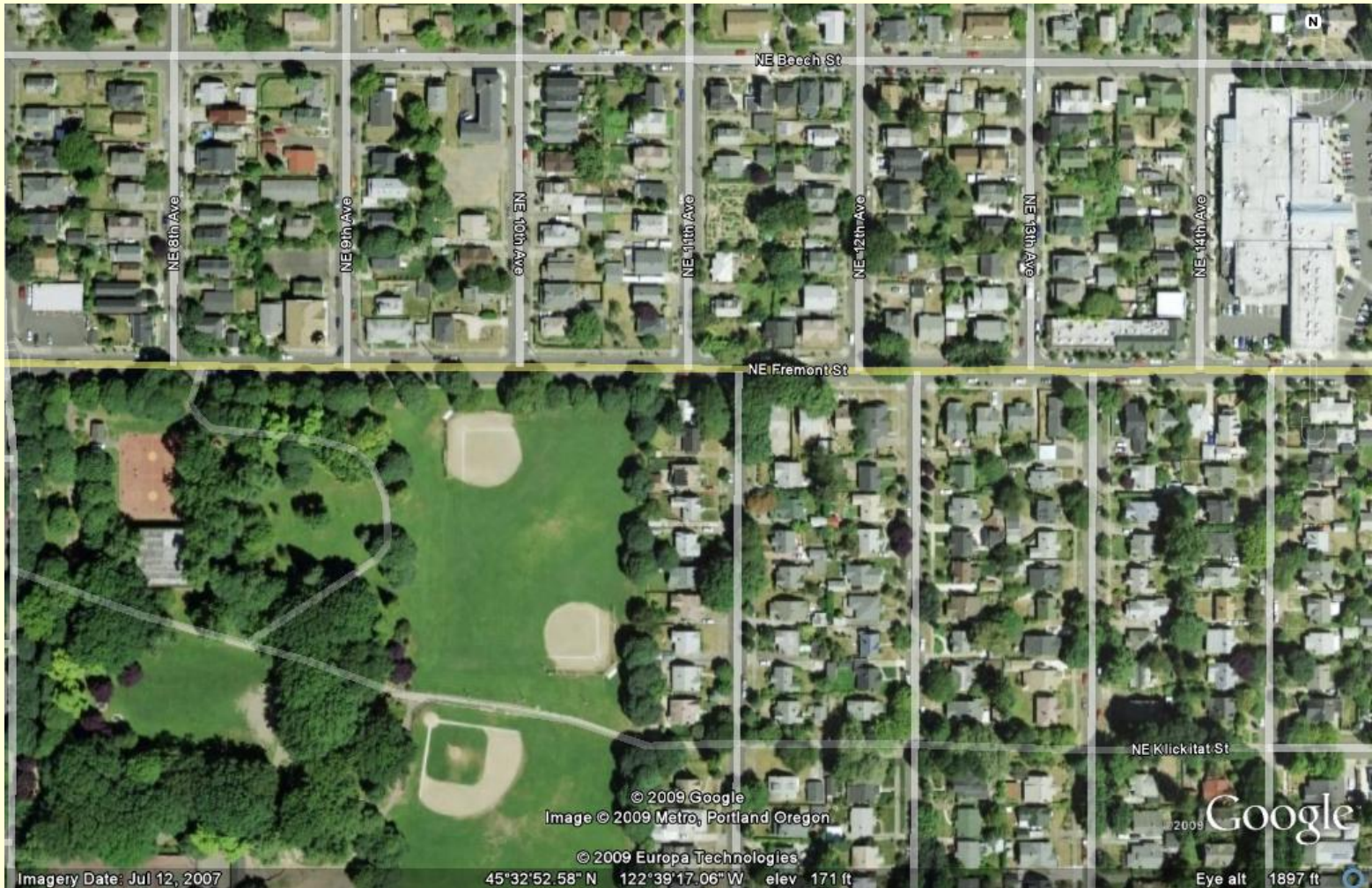


NE Fremont Street Pedestrian Safety

A project of the Sabin Community
Association,
David Sweet Land Use and
Transportation Chair

Project Area 7th-15th



NE Fremont, 7th-15th

- ◆ Two lanes
- ◆ Neighborhood collector
- ◆ Major emergency response street
- ◆ Posted 30 MPH
- ◆ Average speed 33 MPH (2006)
- ◆ 12,000 ADT (2006)
- ◆ All intersections offset

8 requests for crosswalks in 8 years

Responses

- ◆ Every intersection is a legal crosswalk.
- ◆ Crosswalks are marked in order to guide pedestrians to a safe crossing at a complicated intersection.
- ◆ Crosswalks are not used to protect pedestrians since the markings give pedestrians a false sense of security.

Irving Park Project



Additional Fremont Problem



Fremont Green Streets Design



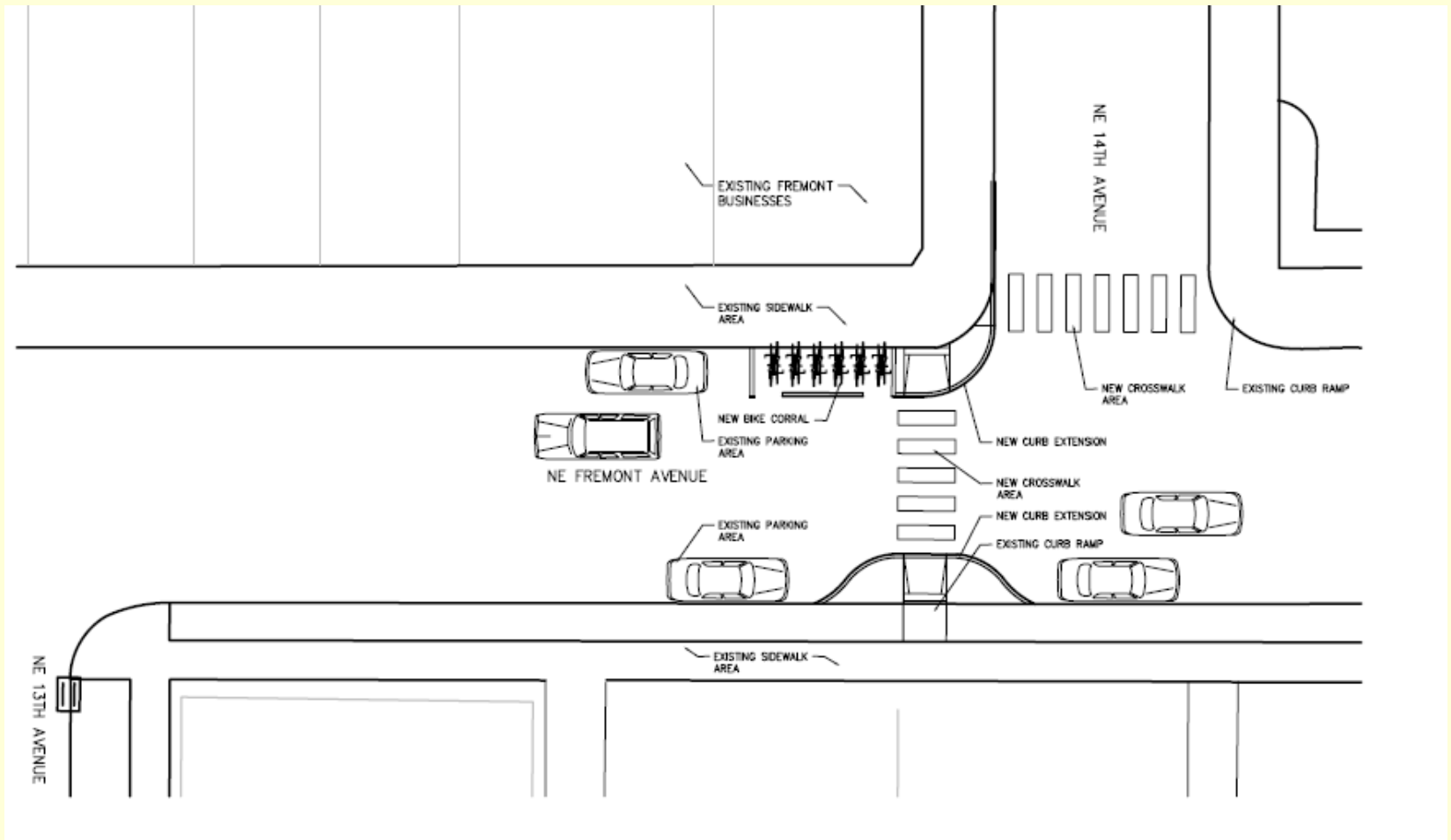
Status of Irving Park Project

- ◆ \$70,000 awarded by COP-BES
- ◆ Matching funds application to EMSWCD
- ◆ Feb. 2010 engineering, permits, bids
- ◆ May-Oct. 2010 construction
- ◆ Oct. 2010 Planting & celebration

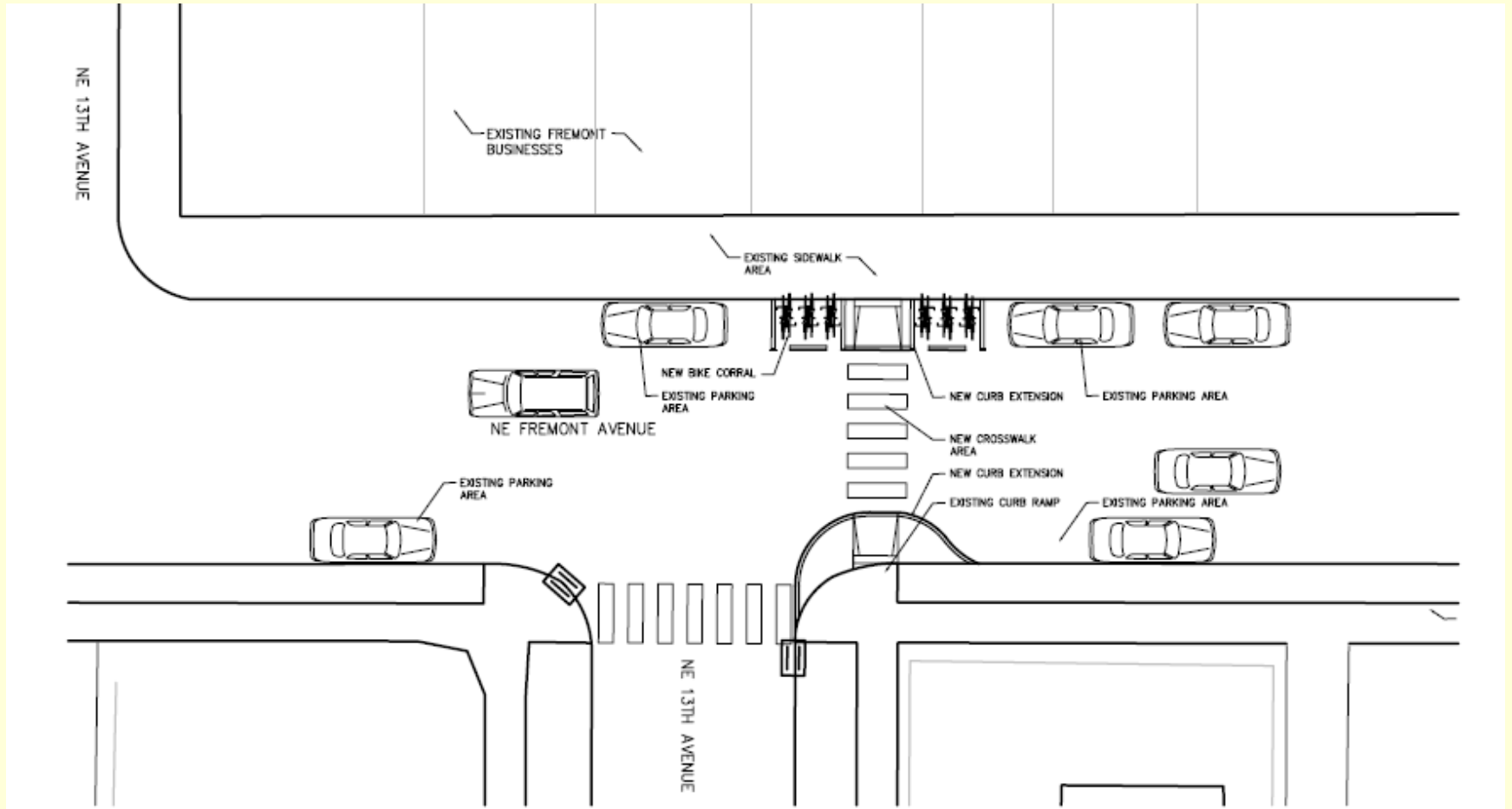
13th-14th Avenue Project



14th Avenue Alternative



13th Avenue Alternative



Next Steps

- ◆ Confirm that all businesses support plans, including possible loss of parking
- ◆ City assigns engineer to draw preferred plan
- ◆ Estimate cost
- ◆ Seek funding